



Living with a Changing Coast

Littoraux et Changements Côtiers



Autumn 2013 LiCCo newsletter

A CROSS CHANNEL PARTNERSHIP PROJECT HELPING COASTAL COMMUNITIES TO BETTER UNDERSTAND, PREPARE FOR AND ADAPT TO THE IMPACTS OF COASTAL CHANGE

CELEBRATING AND ADAPTING TO A CHANGING COAST IN POOLE HARBOUR AND PURBECK

This year began with record rainfalls and landslides which have covered beach huts and taken bites out of the coast path, eventually summer arrived bringing out a great number of visitors. It has been a busy time for the LiCCo project, a summary of activities is described below for your interest. If you would like any further information please go to www.licco.eu and let us know your thoughts on living with your changing coast.



Reminisce - indulge in enjoyable recollection of the past ...

The Living with a Changing Coast team are working to prepare a coastal reminiscence exhibition for Spring 2014. The exhibition will use old postcards, holiday snaps, paintings, film, audio and maps to show how the coast has changed at Studland, Swanage and Durlston and Wareham. If there is anyone, of any age, who would like to get involved we would love to hear from you. **Any children interested in interviewing their grandparents or parents about how they have seen the coast change in this area for the exhibition could have the chance to win a great prize.**

To find out more see the contact details at the end of the newsletter.



Two stages in the erosion at the Foreland and Harry Rocks. Corrected as far as possible from an old and damaged lantern slide. Dates not known. Original courtesy of Mr and Mrs Woods. *Sea View, 2008.*

Brownie "coast badge" events at Studland

The first two weeks in July we were busy trialling coastal activities with 25 brownies from Swanage, as a first step in designing and developing a "coast badge". Activities ranged from recreating the coastal processes which resulted in Old Harry rocks, a beach clean – an exercise looking at beach litter, its origins, impacts and how it can be recycled, sewage soup – the water cycle explained, a beach scavenger and creation of coastal art demonstrating endangered local species.

The group had a great time. Thanks to the staff and volunteers from the Dorset Coast Forum's Litter Free Coast and Sea campaign, Wessex Water, and the National Trust who helped us in making these events a success!



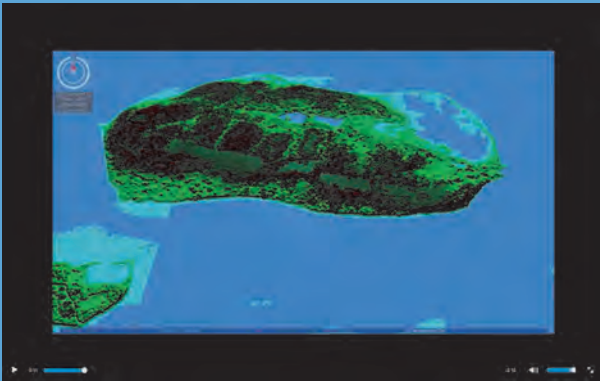
Monitoring the coast at Studland

The beaches at Studland are very dynamic. In some areas metres of sand can be lost one month and then miraculously replaced the next. In order to better understand how the beaches at Studland are changing an annual monitoring programme has been set up to collect data on the movement of the strand line, the dunes and the cliffs to the South of the bay. This information will be added to that already being collected by the Channel Coast Observatory (on a less frequent basis) to build a clearer picture of the patterns of movement at the beaches.



Visualising our future coast

Current projections suggest that by 2060 the sea level could be 40cm higher than it is today. Forty centimetres does not sound much but what impact could that have on our coast, and would it magnify the effect of winter storms? The LiCCo team is working with Geovizix to create future sea level visualisations in order to better understand the possible impacts sea level rise could have on Poole Harbour and surrounding areas. It is hoped these can be used to open up discussions about how we can best adapt to future coastal change.



Visualisation of Brownsea Island showing possible changes to the lagoon



Learning about how to save water and energy the old fashioned way

New to the LiCCo team's tool kit is the hand painted coastal change snakes and ladders, complete with questions on how to save and energy and water. So far it has proved a great hit with kids on the beach.

Landslides in North Swanage Bay—cooperating to clean up

Record rain at the end of 2012 resulted in landslides at North Swanage. A large area of clays and sand slid down the cliff to the North of Swanage Bay, in some areas building up on or over the promenade and submerging some beach huts. With numerous private owners affected the LiCCo team is helping to coordinate the clear up.

A full cliff stability survey has been completed which has provided a number of options. The LiCCo project team are working with a multi-agency group and beach hut and cliff top owners to help to coordinate a strategy for managing cliff instability at North Beach in the long term.



Images showing beach huts before and after the landslide

Studland Coastal Change Residents' Guide

Have you ever wondered why South or Little Beach is eroding? Where does the sand go? How dredging of the harbour affects Studland's beaches? We would like to answer these questions and many more through the development of a residents' guide to coastal change. To make sure we are answering all your questions the LiCCo team will be distributing a survey in November where you can send in any questions you would like to feature as part of the guide.

We will then research your questions and provide the answers in a small booklet for each household. The aim of this booklet is to raise awareness of what is happening to the beaches and what is likely to happen in the future.



How to enjoy the beach at Swanage safely

As requested by the Swanage Coastal Change Forum, a forum of residents associations and coastal authorities, the LiCCo project is producing interpretation signs to be installed along the North shore at Swanage. The purpose of the signs is to inform visitors and residents of why there have been landslides in that area and how to continue enjoying the beach while being aware of the potential dangers.

The draft designs of the signs were displayed at a recent Swanage landslide information meeting. We would like to thank those residents who provided us with comments and feedback, which will be incorporated into the new design for the signs.



Coastal Change Challenge for kids

Many children from local, regional and national schools visit Purbeck to learn about geology, geomorphology, ecology and coastal processes. The LiCCo team is working on two small projects to provide teachers and families with materials to help children learn about coastal change and adaptation.

We are working with an education consultant to produce teaching material for local schools; and a children's writer, and local artist - Janine Drayson, to produce a fun, educational, self-guided walk around Studland's beaches. This walk will include games and activities—hopefully all the ingredients for a fun family day out at the coast.

Flood and Coastal Erosion Risk Management Strategy

The public consultation on the draft Flood and Coastal Erosion Risk Management Strategy is now complete. This involved a touring exhibition, public meetings and discussion sessions. We received 45 responses and a summary report is been produced which will be available in early November. For more information is available at:

<http://www.environment-agency.gov.uk/homeandleisure/floods/121331.aspx>



"The LiCCo Project has been a great help in raising awareness of the coastal change issues here in Swanage"

IAN BROWN, COAST GUARD AGENCY

COASTAL ADAPTATION WORKSHOPS



On 11th July, we led a workshop "Walking the Talk: Adapting to Coastal Change" for a wide range of National Trust staff. We had various speakers who spoke about how the coast is currently being managed, what could happen in the future, the difficulty of dealing with uncertainty, and what opportunities and challenges coastal change could bring to the various National Trust properties in the future. The workshop was well received and we plan to run more for other groups too.

"Future-proof" beach hut

Students at the Arts University Bournemouth have been given a brief to design a climate change and sea level resilient beach hut for Studland. The winning design will be exhibited and may even be built on Studland beach.



Living with a changing coast in Normandy

LiCCo Project Site: Sienne Havre

On the 28th April we showcased the LiCCo project at the Festival *Terre & Grandes Marées* and presented our work on the Sienne Havre. After a quiet morning, we were very busy all afternoon speaking to the public, informing them about the project and our partners. Debates took place with many of the people that live and work on the Sienne Havre, who were able to share their knowledge of the site.



French partners visit UK sites faced with coastal change issues

Enjoying unseasonably warm weather for September the French partner organisations involved in the LiCCo project crossed the channel to learn more about this unique area of the England and some of the challenges coastal communities are dealing with.

The visit focused on Swanage, Durlston, Studland and Brownsea Island and some of the challenges brought by the wet weather at the end of 2012 and beginning of this year, how those are being managed and how this compared with the same situation in Normandy.

LiCCo Project Site: Saire Valley

Studies on the environmental factors influencing Kentish Plover nesting will be complete by September 2013.

